

# Instrukcja montażu wkładu RJ45 FTP/STP Keystone

(Keystone Jack Instruction RJ45 FTP/STP)

ISO 9001:2015 QMS

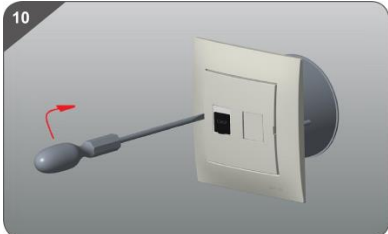
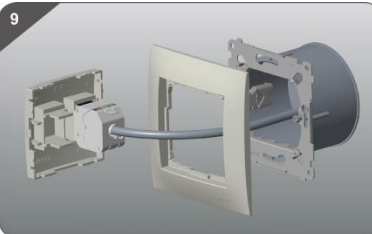
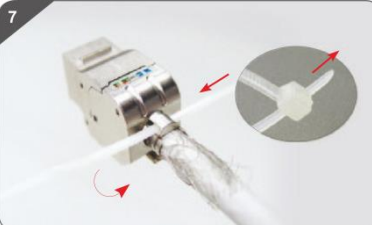
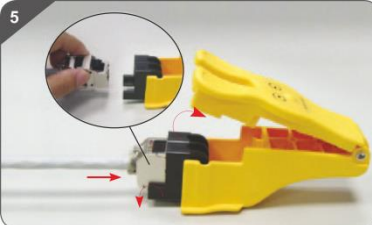
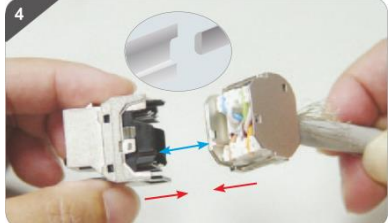
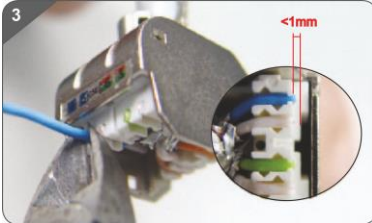
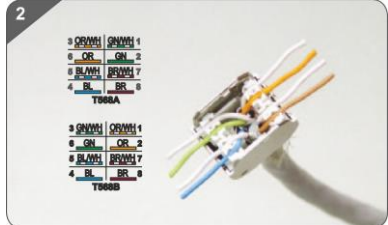
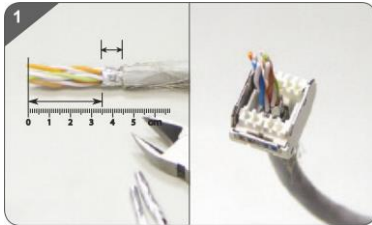


**ŁKONTAKT SIMON**

43-500 Czechowice-Dziedzice  
ul. Bestwińska 21  
POLSKA (POLAND)  
Tel. +48 32 324 63 00  
Fax +48 32 215 35 55

[www.kontakt-simon.com.pl](http://www.kontakt-simon.com.pl)

e-mail: [info@kontakt-simon.com.pl](mailto:info@kontakt-simon.com.pl)



Montaż gniazda do puszkii  
(Mounting in wall box)

Demontaż gniazda z użyciem narzędzia  
(Disassembly cover with tool in use)